

SUFFOLK WATER SUPPLY PROJECTS

SUFFOLK WATER RECYCLING, TRANSFER & STORAGE

Parish Council Members Briefing 3
27 November 2025

Since we are at an early stage of project development, assumptions, design details, and optioneering may be subject to change or iterative review as we undertake public consultation and evolve our scheme to a level of maturity suitable for a DCO application.

WELCOME AND INTRODUCTIONS

Agenda

1. Water Resource Management Plan (WRMP) Overview
2. Suffolk Water Recycling, Transfer and Storage (SWRTS) Overview
3. SWRTS Non Statutory Consultation
4. DCO timeline

WRMP OVERVIEW

WRMP OVERVIEW

PROGRAMME OVERVIEW



Suffolk water supply area

- 300,000 people
- Driest region in the UK (Serious Water Stressed Area)
- Highest proportion of water dependant SSSIs

WRMP OVERVIEW

REASONS FOR FORECAST SUPPLY DEFICIT

Our Water Resources Management Plan 2024 is forecasting a supply deficit



Abstraction licence sustainability reductions

The quantity of water we are permitted to abstract from our groundwater sources is being reduced over the next 5 years.



New non-household demand

~11Ml/d of new business demand is forecast from the food, drink, energy and cosmetics sectors.

- We have sufficient water resources to supply current and forecast household demand and current business demand.
- However, we do **not** have sufficient water resources to supply all the forecasted new non-domestic business demand.
- To protect our existing customers' supplies, we have needed to implement a non-domestic moratorium on new mains water supplies to businesses while we develop new water supply schemes.

WRMP OVERVIEW

SUFFOLK WATER SUPPLY PROJECTS

Suffolk Water Recycling Transfer & Storage (SWRTS)



Lowestoft Advanced Water Recycling

- 16.8MI/d effluent from Anglian Water's Water Recycling Centre.
- Treated at new Advanced Water Recycling Centre to produce up to 10.6MI/d for augmentation of the River Waveney.
- Waste stream returned to Anglian Water/ discharged via Long Sea Outfall.



Suffolk Pipeline and Storage Enhancements

- 60km of strategic pipeline network enhancements circa 600mm dia.
- 20km of distribution pipework circa 250mm dia.
- 2 new storage reservoirs located at Lodgewood and Eye (15MI capacity).

Development Consent Order

North Suffolk Reservoir



North Suffolk Reservoir

- 30,000+ megalitre(MI) capacity.
- Supplied with excess surface water flow during winter in the River Waveney.
- Raw water used to supply our existing Barsham WTW for treatment.

Consenting Strategy (TBC)

SUFFOLK WATER RECYCLING TRANSFER AND STORAGE (SWRTS) - OVERVIEW

SUFFOLK WATER RECYCLING, TRANSFER AND STORAGE PROJECT OVERVIEW

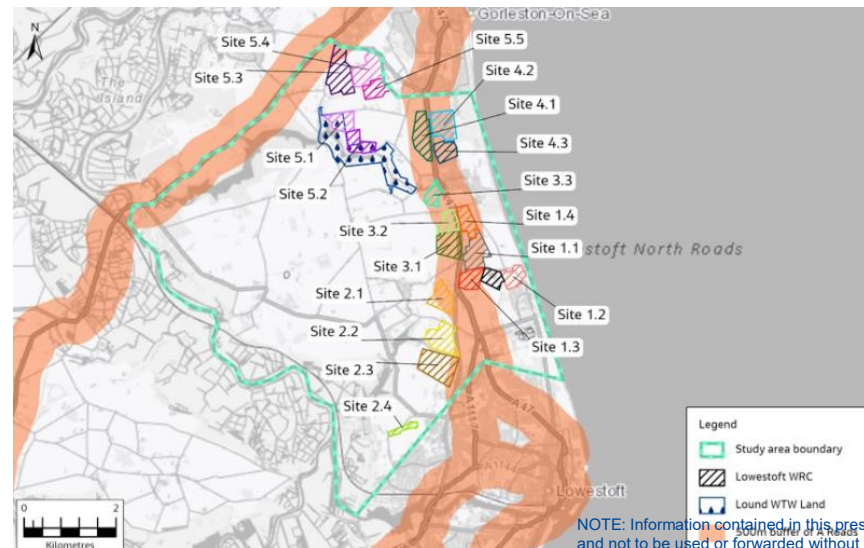
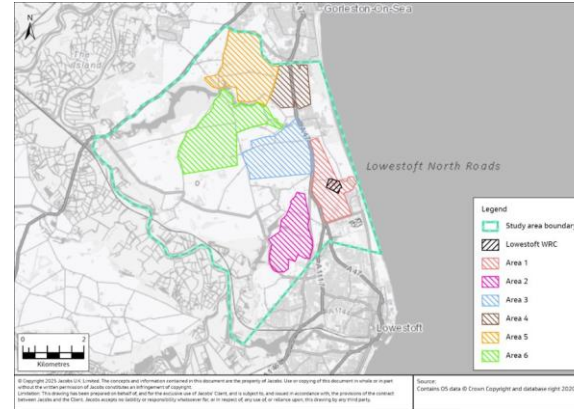
- Advanced Water Recycling Plant (AWRP)
- Pipeline from existing Lowestoft Water Recycling Centre to the Advanced Water Recycling Plant (AWRP);
- Long sea outfall (proposed from AWRP)
- Pipeline between proposed AWRP location to outfall along the River Waveney;
- Abstraction at the existing Barsham Water Treatment Works (WTW)
- Two proposed Service Reservoirs (central and western);
- Pipeline from the existing Barsham WTW to the central Service Reservoir (near Sibton);
- Pipeline from central Service Reservoir (near Sibton) to the western Service Reservoir (near Eye);
- Pipelines from the western Service Reservoir to the existing local water network;
- Pipeline from the central Service Reservoir (near Lodgewood) to the existing Saxmundham water tower;
- and
- Pipeline from near Saxmundham water tower to Sizewell C Nuclear Power Station.



SUFFOLK WATER RECYCLING, TRANSFER AND STORAGE

ADVANCED WATER RECYCLING PLANT (AWRP) – SITE SELECTION

- Stage 1 defined the boundary of the study area and identified potentially viable areas.
 - Major environmental, topographical, planning and physical constraints assessed.
 - 6 viable areas identified
- Stage 2 applied criteria to the potentially viable areas to identify specific sites for development of the AWRP.
 - Hedgerows, field and property boundaries used to define potential sites
 - 19 potential sites identified
- Sites 3.1, 3.2, 3.3 and 5.5 are the best performing and have been progressed to Stage 3 (suitable access, avoided major engineering and environmental constraints).



NOTE: Information contained in this presentation is confidential and not to be used or forwarded without NWG permission.

SUFFOLK WATER RECYCLING, TRANSFER AND STORAGE

ADVANCED WATER RECYCLING PLANT TO RIVER WAVENEY

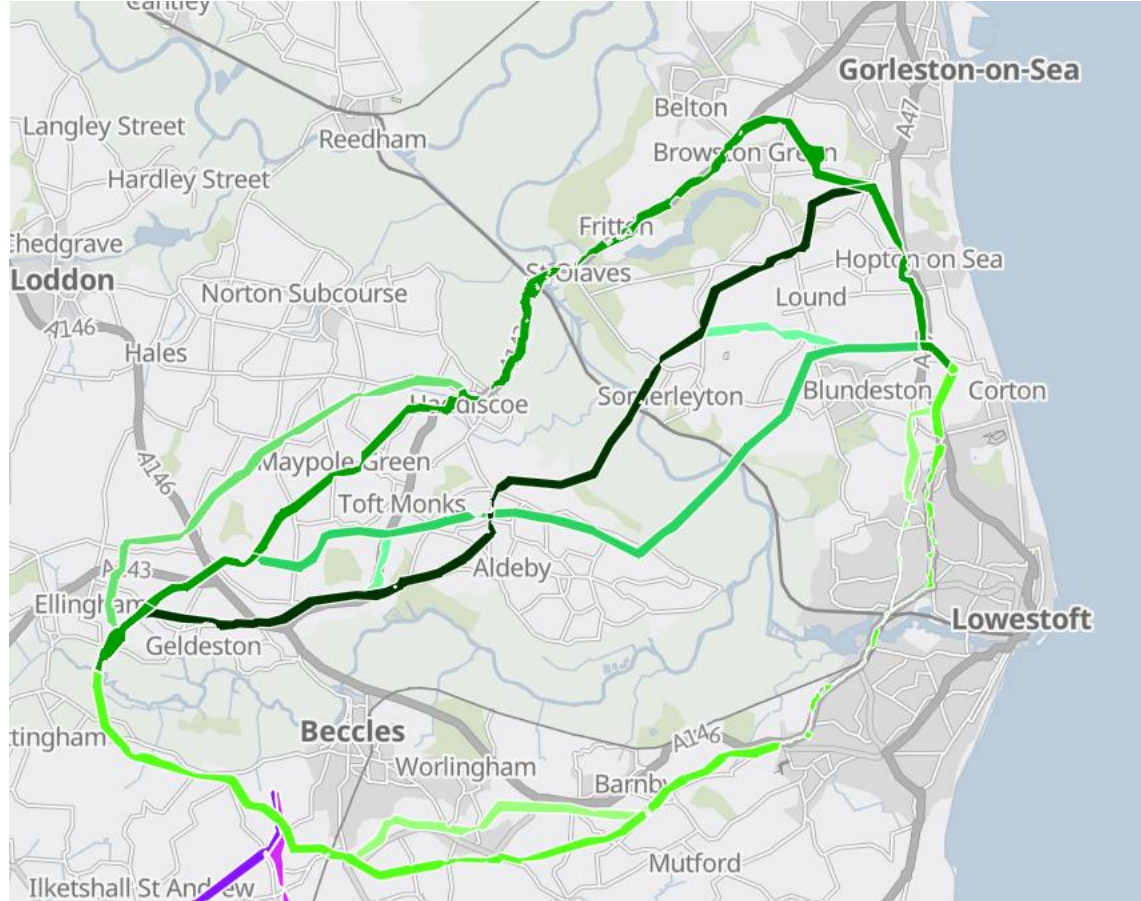
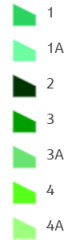
At Stage 1, 45 segments were drawn and assessed at Stage 2 against planning, environment, engineering and land criteria.

15 segments were parked on the basis of constraints including:

- Long trenchless crossing requirements that add significant complexity
- Proximity to high pressure gas main
- Presence of priority habitat including Deciduous & Ancient Woodland, Veteran Trees,
- Proximity to Coastal & Floodplain
- Passage through Historic landfill sites including Camps Heath & Whites Pit.

Crossings of the Broads National Park and key rail routes remain and are key focus areas for stage 3.

LPA's East Suffolk, Great Yarmouth, South Norfolk, The Broads



SUFFOLK WATER RECYCLING, TRANSFER AND STORAGE

BARSHAM WATER TREATMENT WORKS TO CENTRAL SERVICE RESERVOIR

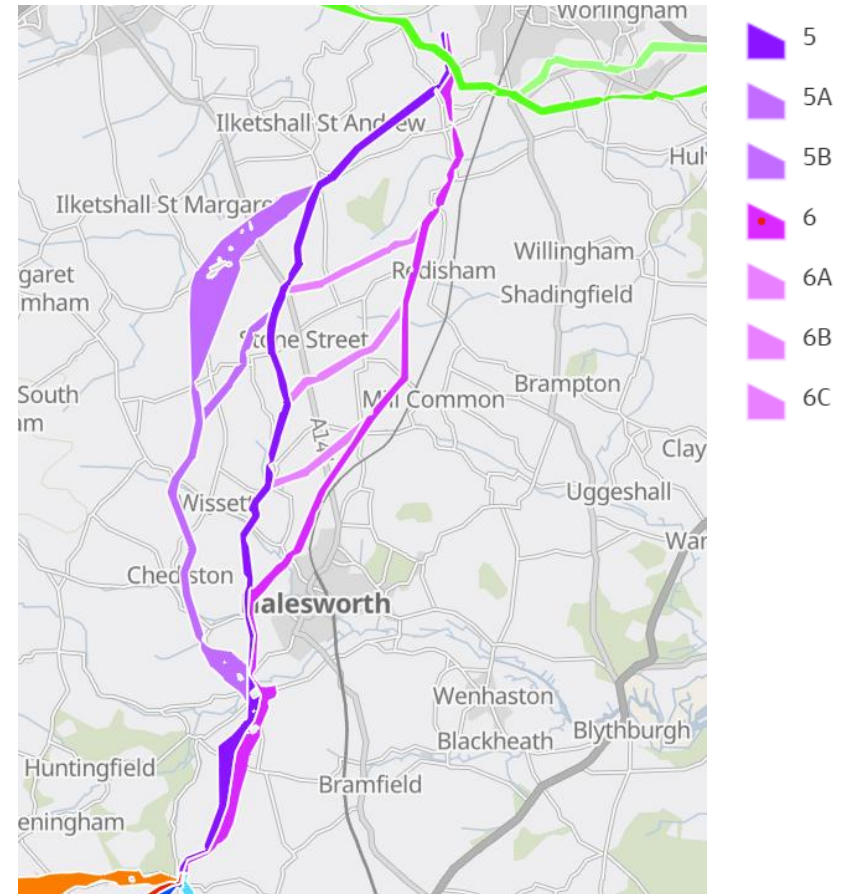
Pipeline from Barsham WTW to Central Service Reservoir

At Stage 1, 33 segments were drawn and assessed at Stage 2 against the planning, environment, engineering and land criteria.

2 segments were parked on the basis of:

- Critical utility crossings.

LPA – East Suffolk



NOTE: Information contained in this presentation is confidential and not to be used or forwarded without NWG permission.

SUFFOLK WATER RECYCLING, TRANSFER AND STORAGE

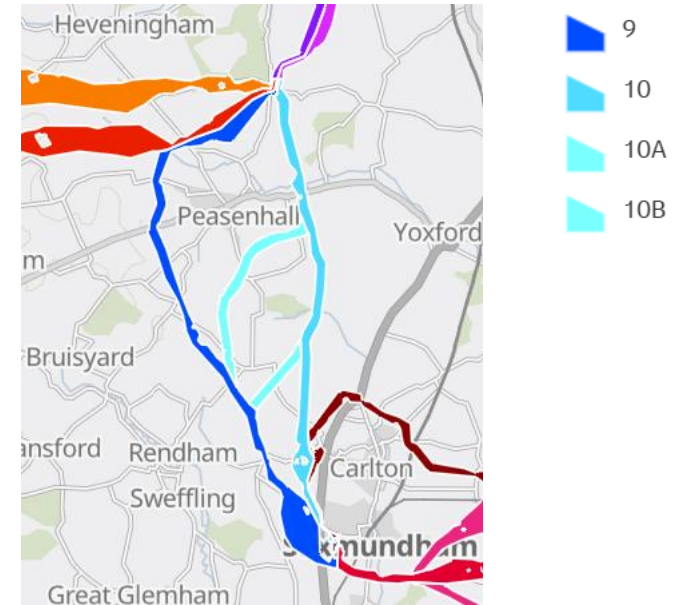
CENTRAL SERVICE RESERVOIR TO SAXMUNDHAM WATER TOWER

Pipeline from Central Service Reservoir to the existing Saxmundham Water Tower

At Stage 1, 32 segments were drawn and assessed at Stage 2 against the planning, environment, engineering and land criteria.

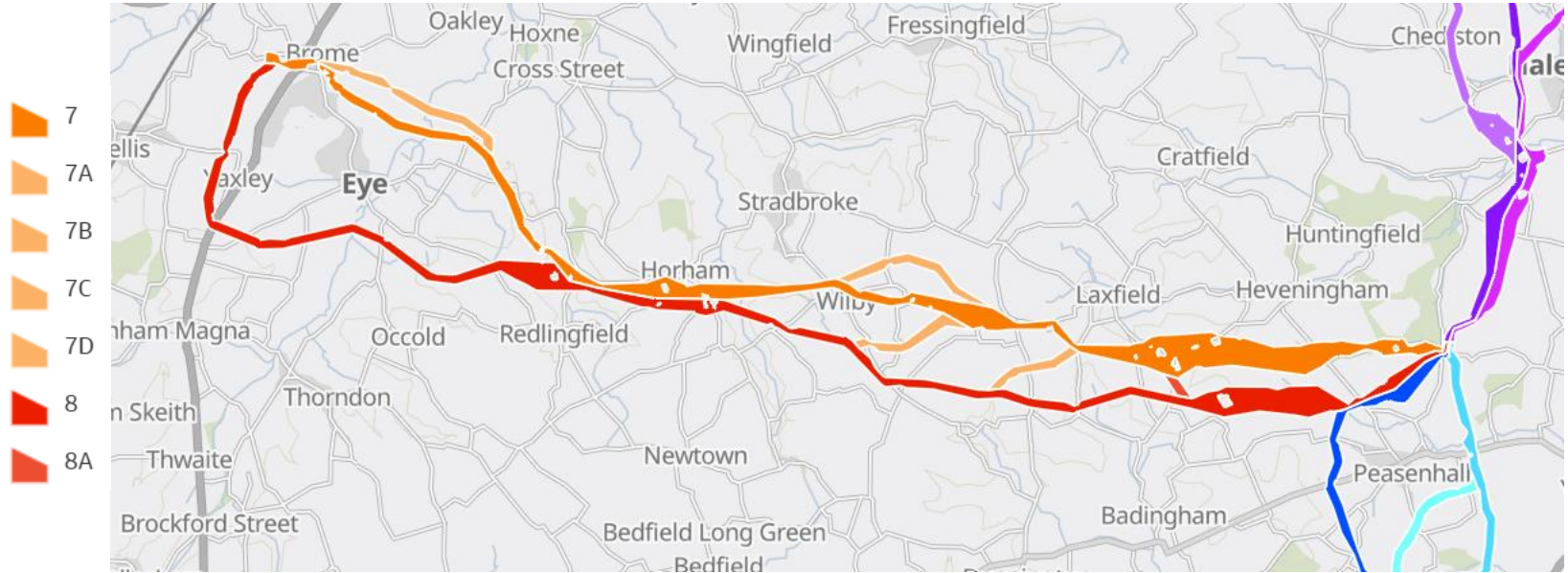
3 segments were parked on the basis of:

- Construction challenges, intersects with high pressure gas main and overhead line
- Limited working space for construction, lack of direct vehicle access.
- Crossing ecological designations including Coastal Floodplain priority habitat and Sibton Park (Park and Garden of Historic or Landscape Interest)



SUFFOLK WATER RECYCLING, TRANSFER AND STORAGE

CENTRAL SERVICE RESERVOIR TO WESTERN SERVICE RESERVOIR



Pipeline from Central Service Reservoir to Western Service Reservoir

At Stage 1, 62 segments were drawn and assessed at Stage 2 against the planning, environment, engineering and land criteria.

9 segments were parked on the basis of:

- Proximity to scheduled monuments, Areas of Local Landscape Sensitivity and contaminated land.
- Flood Risk.
- Crossing of watercourses, PRowS and main roads with limited diversion options.

SUFFOLK WATER RECYCLING, TRANSFER AND STORAGE

SAXMUNDHAM WATER TOWER TO SIZEWELL C

At Stage 1, 37 segments were drawn and assessed at Stage 2 against the planning, environment, engineering and land criteria.

6 segments were parked on the basis of:

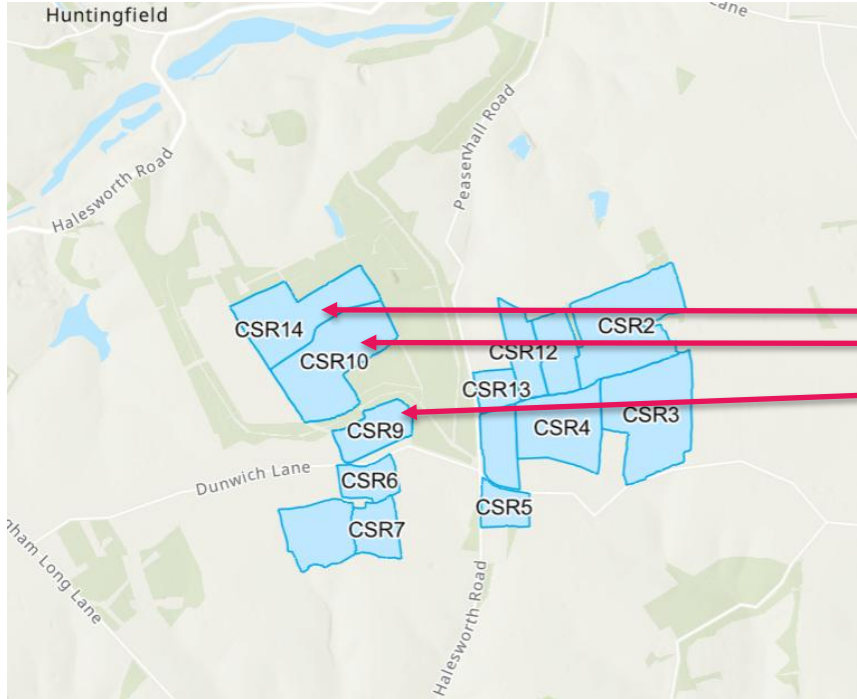
- Significant construction, utility, environmental and infrastructure challenges
- Proximity to contaminated land
- Proximity to Scheduled Monuments



LPA – East Suffolk

SUFFOLK WATER RECYCLING, TRANSFER AND STORAGE

CENTRAL SERVICE RESERVOIRS – SITE SELECTION



Central Service Reservoir near EWS existing Lodgewood Water Tower

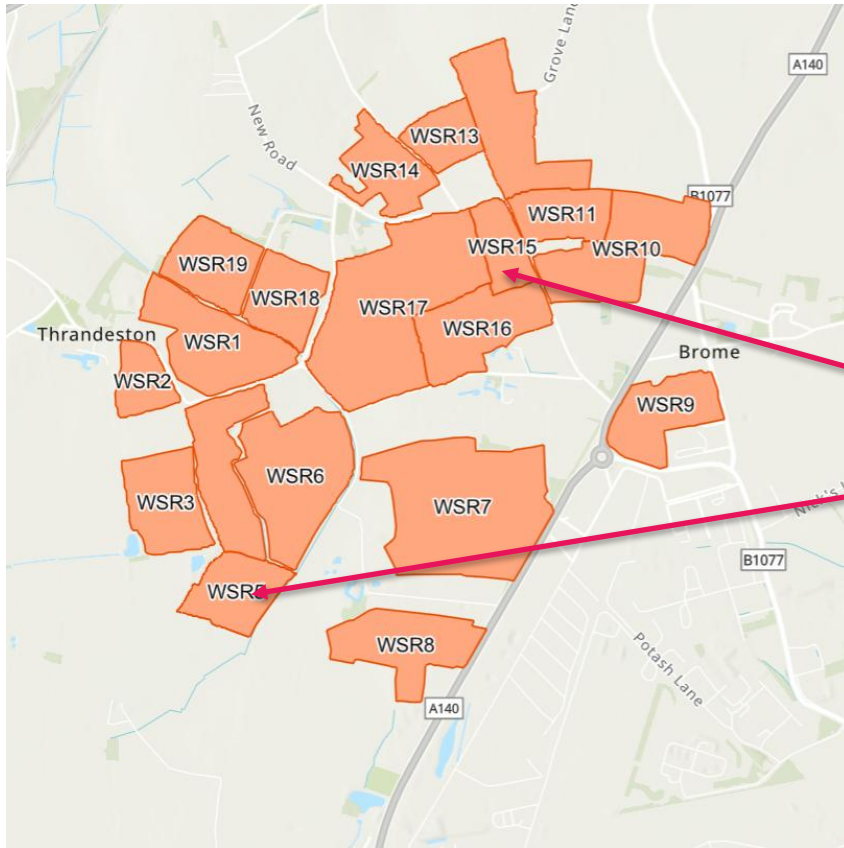
At Stage 1, 14 land parcels were drawn and assessed at Stage 2 against the planning, environment, engineering and land criteria.

CSR 9, CSR10 and CSR 14 land parcels were parked on the basis of:

- Proximity to Heveningham Hall registered park and garden

SUFFOLK WATER RECYCLING, TRANSFER AND STORAGE

WESTERN SERVICE RESERVOIRS –SITE SELECTION



Western Service Reservoir near Eye

At Stage 1, 19 land parcels were drawn and assessed at Stage 2 against the planning, environment, engineering and land criteria.

WSR 5 and WSR 15 land parcels were parked on the basis of:

- The National Grid OHL that run across the parcels

SUFFOLK WATER RECYCLING TRANSFER AND STORAGE (SWRTS) – NSC CONSULTATION

SUFFOLK WATER RECYCLING, TRANSFER AND STORAGE

NON STATUTORY CONSULTATION

- **Six week** duration
 - **Starts Wednesday 29th October**
 - **Ends Wednesday 10th December.**
 - **Eight** public events and **eight local** consultation hubs.
 - **Digital** and **print** awareness campaign.
 - Dedicated online **consultation hub** and print materials.
- The location for the proposed **advanced water recycling plant** in Lowestoft.
 - The locations for the **proposed storage reservoirs**.
 - The **corridor for the proposed pipelines** needed to transfer water between the following:
 - Existing Lowestoft Water Recycling Plant to the proposed advanced water recycling plant;
 - The advanced water recycling plant to the River Waveney; and
 - The pipeline routes from Barsham WTW to the two proposed service reservoirs and the route between Saxmundham Water Tower and Sizewell C.

SUFFOLK WATER RECYCLING, TRANSFER AND STORAGE

WHO WE WILL CONSULT?

Who will we consult?

- Local Communities and the General Public:
 - Hard to reach, seldom heard and vulnerable communities
- Landowners and Occupiers
- Local Authorities and Elected Representatives
- Statutory and Non-Statutory Bodies (engaged voluntarily at this stage):
 - Environmental regulators (e.g., Environment Agency, Natural England)
 - Highways authorities, utilities, emergency services
 - Historic, cultural, or health bodies
- Stakeholder Organisations:
 - NGOs and charities with an interest in environment, heritage, or community issues
 - Local campaign groups
 - Business and trade associations
- Special Interest Groups
- Schools, faith groups, accessibility networks
- Recreational or user groups (e.g., ramblers, cyclists, wildlife trusts)

SUFFOLK WATER RECYCLING, TRANSFER AND STORAGE

HOW WE WILL CONSULT?

Consultation material

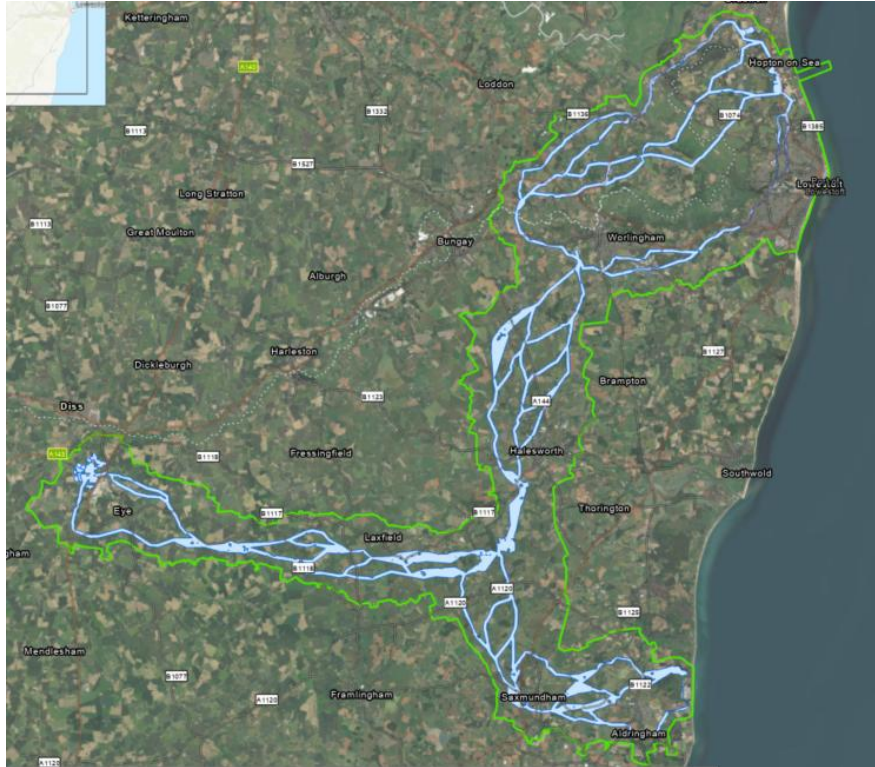
- Brochure
- Feedback Form
- Book of Maps
- Approach to Consultation
- Q&A document
- Scheme Development Summary

Promotional material

- Pre-awareness campaign early October: Pre-launch website
- Emails
- Letters
- Leaflet
- Adverts
- Website
- Social media
- Posters
- Display boards / banners
- Webinar presentation

SUFFOLK WATER RECYCLING, TRANSFER AND STORAGE

COMMS AND ENGAGEMENT ZONES



Zones	Definition	Method
Zone A (ZA)	Persons with an Interest in Land (PILS) including anyone who owns, leases, rents, or occupies the land or has some other legal right over or in relation to it within the Project boundary and where access is needed for surveys.	Letter & Leaflet
Zone B (ZB)	500m offset from the Project boundary, extended where possible to include addresses which were within a feature such as a main road.	Leaflet
Zone C (ZC)	Extended to the boundaries of parishes that crossed the corridor sections within ZB as well as neighbouring parishes.	Not directly contacted, posters, social media and adverts in local papers

SUFFOLK WATER RECYCLING, TRANSFER AND STORAGE

CONSULTATION HUBS

8 consultation hubs that will host physical copies of the consultation materials. These have been selected to mirror the event locations.

Library	LPA
Beccles Library	Suffolk CC
Bungay Library	Suffolk CC
Oulton Broad Library	Suffolk CC
Halesworth Library	Suffolk CC
Saxmundham Library	Suffolk CC
Leiston Library	Suffolk CC
Framlingham Library	Suffolk CC
Eye Library	Suffolk CC

SWRTS NON-STATUTORY CONSULTATION UPDATE

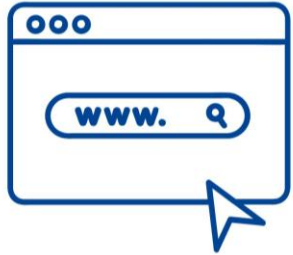
CONSULTATION EVENTS: OVERVIEW

- **835** attendees across seven events to date, with one more on 29 Nov.
- Two smaller events are also planned in Saxmundham and Thrandeston to meet local demand – 3 December.
- Strong turnout at all events, with higher than expected participation in rural areas.



SWRTS NON-STATUTORY CONSULTATION UPDATE

ANALYTICS AND NEXT STEPS



11.6K
PAGE VIEWS



112
FEEDBACK
RESPONSES



835
EVENT
ATTENDEES

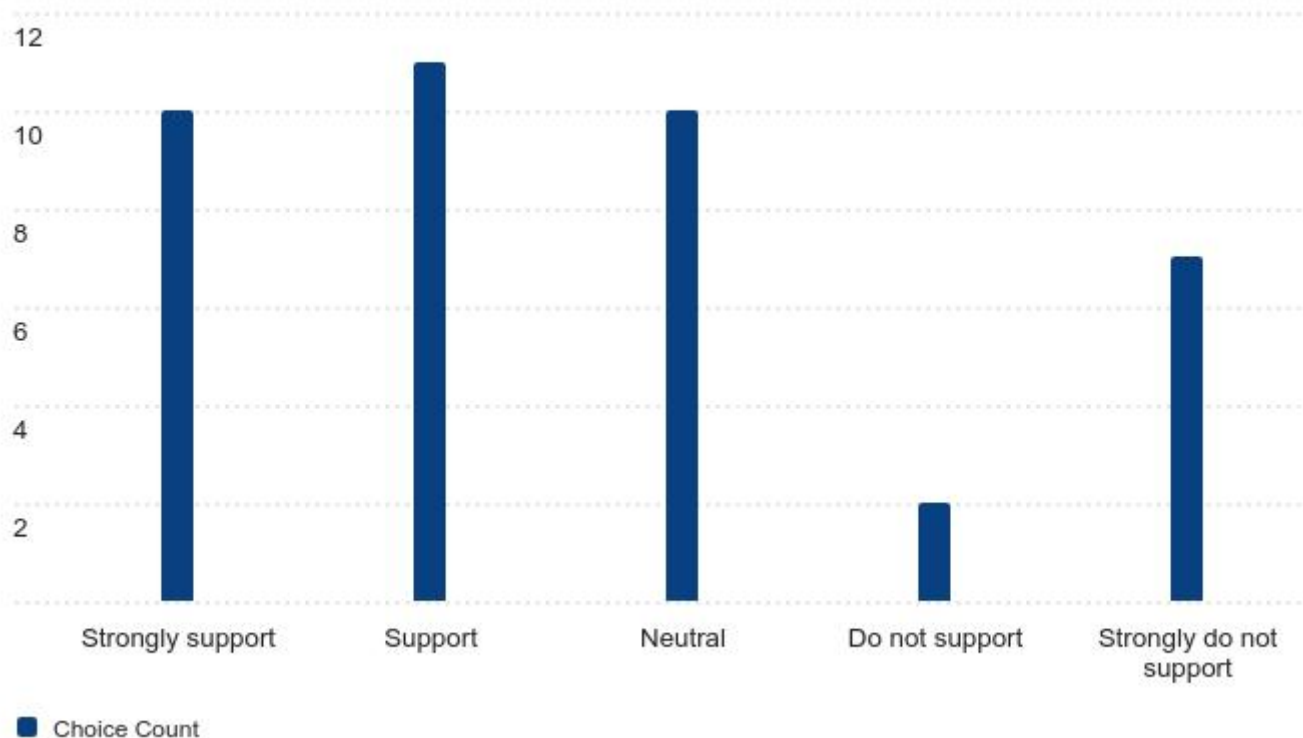


200+
EMAIL
SIGN UPS

SWRTS NON-STATUTORY CONSULTATION UPDATE

ANALYTICS AND NEXT STEPS

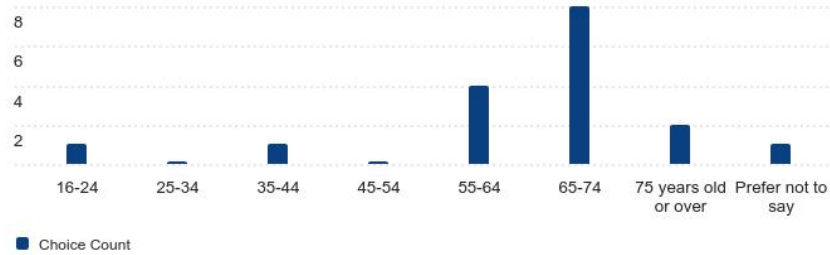
Q1a - Overall, what do you think about the Suffolk Water Recycling, Transfer and Storage Project as a response to the water supply shortfall in the East of England?



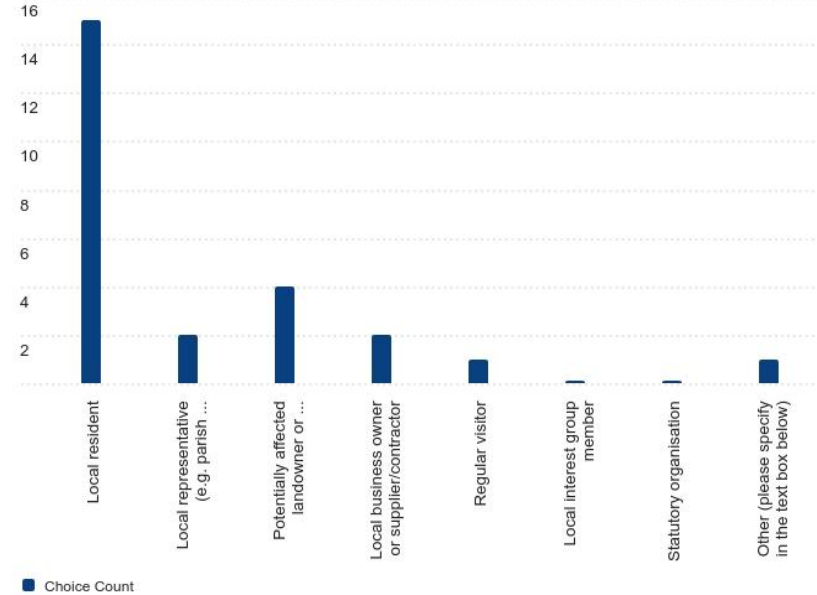
SWRTS NON-STATUTORY CONSULTATION UPDATE

ANALYTICS AND NEXT STEPS

Q14o - What is your age?



Q14h - Who are you responding as? (You may tick more than one box)



SWRTS NON-STATUTORY CONSULTATION UPDATE

ANALYTICS AND NEXT STEPS

Next steps

- Three further NSC events planned.
- Lowestoft (29/11)
- Additional events Saxmundham and Thrandeston (both on 03/12).

- Consultation closes **Wednesday 10 December 2025**

SUFFOLK WATER RECYCLING, TRANSFER AND STORAGE

CONSULTEE FEEDBACK

People will be able to respond using the following formal channels;

- Email comments to dedicated email.
- Letters to freepost consultation address.
- Feedback form, located on the project website



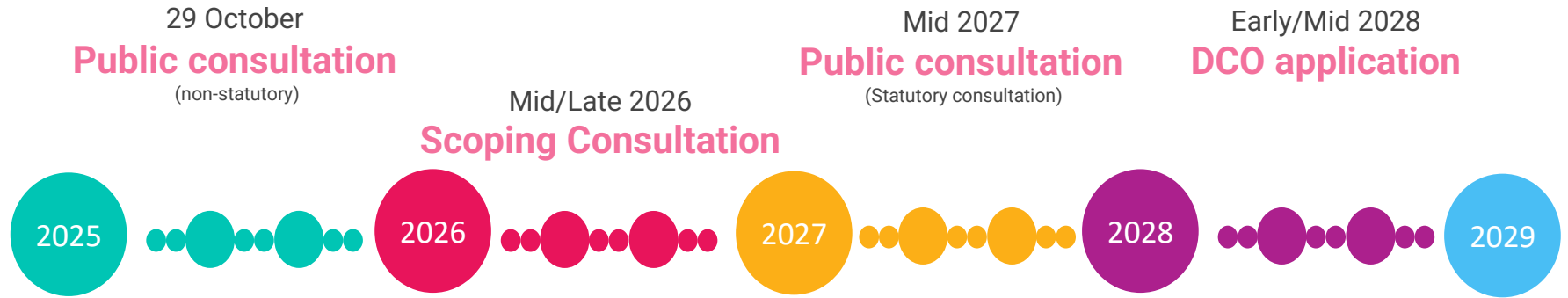
North Suffolk Winter Storage Reservoir Project

TIMELINES

TIMELINE

SWRTS DCO TIMELINE

Suffolk Water Recycling, Storage and Transfer project timeline



North Suffolk Winter Storage Reservoir Project

QUESTIONS

ESSEX & SUFFOLK
WATER *living water*

THANK YOU